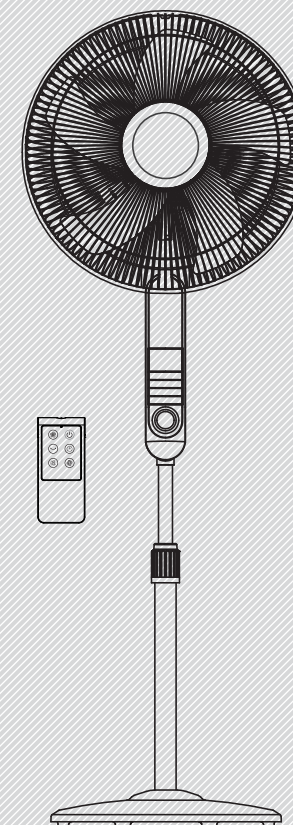


ELECTRIC FAN



OWNER'S MANUAL

16" STAND FAN

MODEL: FS40-15FR

READ AND SAVE THESE INSTRUCTIONS

Attention: Pictures in the IM are for reference only.

GD Midea Environment Appliances MFG.Co.,Ltd.

No.28, Dong Fu Road, Hesui East Industrial Area, Dong Feng Town,
Zhongshan, Guangdong 528425 P.R.China

CAUTION

Read Rules for Safe Operation and Instructions Carefully.

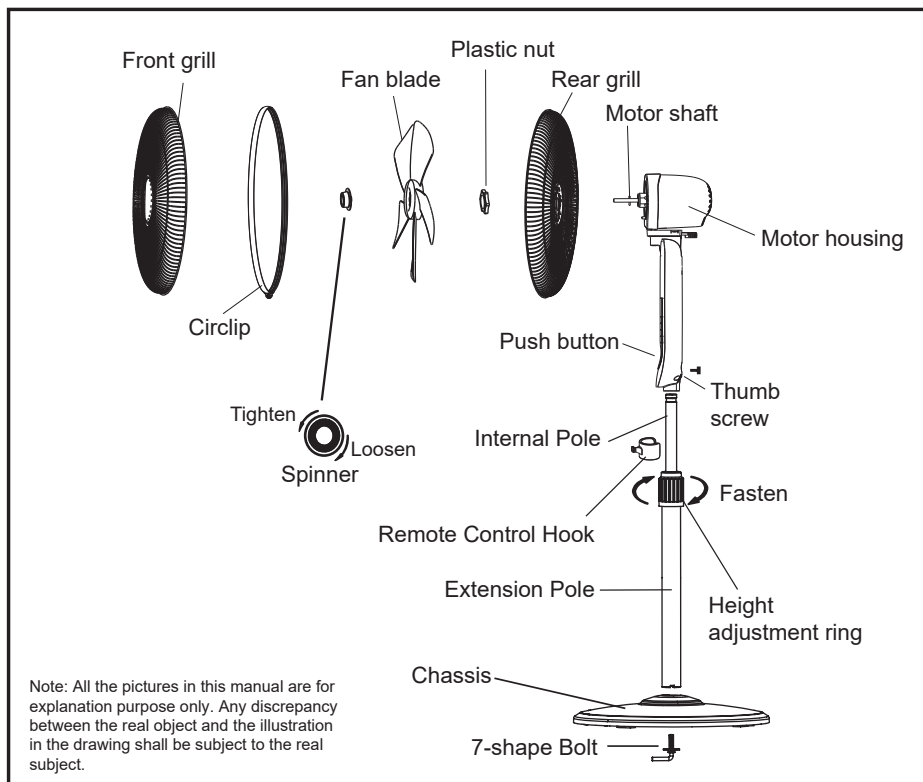
WARNING

1. If the supply cord is damaged, it must be replaced by manufacturer or its service agent or a similarly qualified person in order to avoid a hazard.
2. To protect against the risk of electrical shock, do not immerse the unit, cord or plug in water or other liquid.
3. This appliance is not intended for use by persons (including children) with reduced physical, sensory or mental capabilities, or lack of experience and knowledge, unless they have been given supervision or instruction concerning use of the appliance by a person responsible for their safety. Children should be supervised to ensure that they do not play with the appliance.
4. When the appliance is not in use and before cleaning, unplug the appliance from the outlet.
5. Keep electrical appliances out of reach from Children or infirm persons. Do not let them use the appliances without supervision.
6. When the fan was assembled, the rotor blade guard shall not be taken off anymore
 - Prior cleaning unplug the fan.
 - The rotor guard shall not be disassembled/opened to clean the rotor blades.
 - Wipe the fan enclosure and rotor blade guard with a slightly damp cloth.

RULES FOR SAFE OPERATION

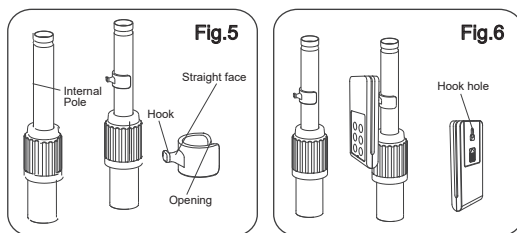
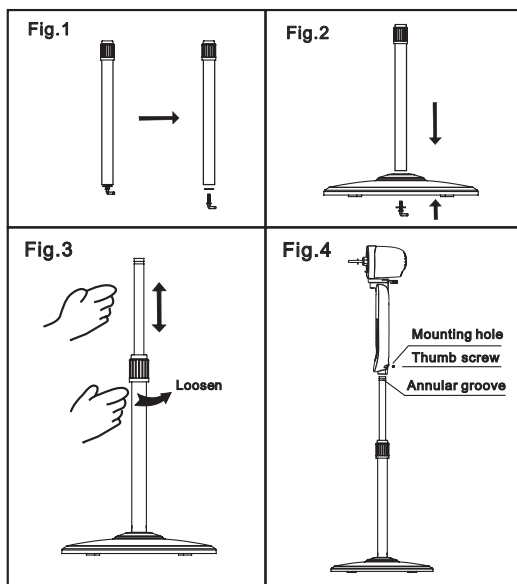
1. Never insert fingers, pencils, or any other object through the grille when fan is running.
2. Disconnect fan when moving from one location to another.
3. Be sure fan is on a stable surface when operating to avoid overturning.
4. DO NOT use fan in window, rain may create electrical hazard.
5. Household use only.

PART FIGURE



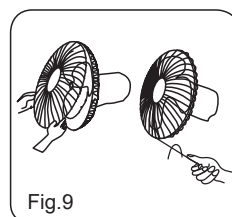
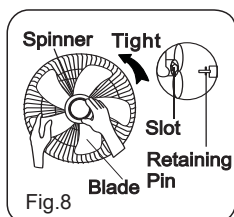
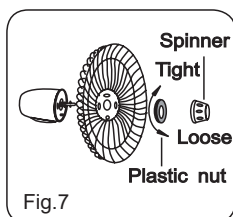
ASSEMBLY OF CHASSIS & COLUMN UNIT

1. Unscrew the 7-shape Bolt from the Extension Pole. (Fig.1)
 2. Insert the extension pole into the chassis and tighten the 7-shape Bolt (Fig.2)
 3. From the extension pole loosen the height adjustment ring and adjust the internal pole to the desired height. (Note: If you can't find the internal pole, it must inside the extension pole. You can pull it out from the extension pole.) (Fig.3)
 4. To attach the head unit to the internal pole, loosen the thumb screw on the bottom of the head unit. Place the head unit on the internal pole and tighten the thumb screw in alignment with the groove on the internal pole. (Fig.4)
- CAUTION:** Height adjustment ring must be fully fastened before the assembly of the motor section to the internal pole.
5. Usage of the remote control hook: make the straight face of hook up, clip the hook to the inner tube along with the opening, the hook can be moved up and down along the tube (Fig.1). The hook of the remote control may be linked to the hole for storage when not in use. (Fig.2)



GRILL & FAN BLADE ASSEMBLY

1. Unscrew the spinner clockwise (or take the spinner out from the bag) and the plastic nut counterclockwise to remove both of them. Fix the rear grill to the motor then tighten the plastic nut again. (Fig.7)
2. Insert the blade into shaft, and make sure the rotor shaft pin is fitted into groove of the blade. Turn the spinner counterclockwise to tighten the blade. (Fig.8)
3. Fix the front grill and the rear grill with circlip clip and then fasten the circlip clip and lock the screw and nut. (Fig.9)





OPERATING INSTRUCTION

I. Remote Controller (Fig.10)

a. KEY INSTRUCTION

1. “” ON/OFF KEY

The “” key is for switching on the fan .The fan will be started at normal wind.

Press the “” key if the fan needs to switch off.

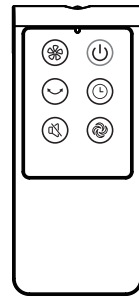


Fig.10

2. “” SPEED KEY

When the fan started, press this key repeated, the fan will work with “0-1-2-3(Off-Low-Medium-High)” circulatory.

3. “” TIMER KEY

When this key is touched repeatedly or kept in pressed state, the time to be set for air delivery increased step by step of each 0.5 hour and sums to 7.5 hours in 15 steps. For instance, if the fan operation is required to be set for 5.5 hours, this key must be touched repeatedly so that the pilot lamps for 0.5, 1 and 4 hours lighten together. It means that the set time is $0.5 + 1 + 4 = 5.5$ hours.

The time setting indicated by the pilot lamp will decrease gradually by a unit of 0.5 hour.

Don't press the TIMER key when the fan is required to operate continuously. At the moment all pilot lamps don't light.

4. “” OSC KEY

After the fan is started, press this key to oscillate the fan, and stop the oscillation at desired direction by pressing again. By rotating the fan head by hand, you can get wider oscillation angle.

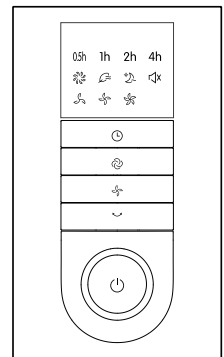


Fig.12

5. “” MODE KEY

Press this key to select mode. The sequence is normal, natural and sleep when this key being touched repeatedly or continuously. The light can indicate mode state.

Normal wind

Press the “mode” key to select the normal wind, then press the “speed” repeatedly to choose 3 speed.


Natural wind

Press the “mode” key to select the natural wind, then press the “speed” repeatedly to choose 3 speed.

Sleep wind

Press the “mode” key to select the sleep wind, then press the “speed” repeatedly to choose 3 speed.

6. “” SILENCE KEY

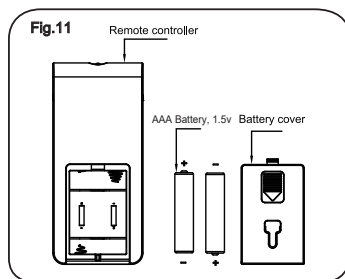
In the state of non-silence, press silence button, the fan would be in silent state and the silence icon  is lightened, while the indicator icons of the other wind types and wind levels would turn off. In silent state, press wind type button, blast volume + and – buttons, there would be no response, while other buttons could respond normally. Press silence button again to quit and the fan would return to the previous working state. The silence icon turns off and 00 is displayed on the digital screen.

b. BATTERIES

(battery not included in the packing)

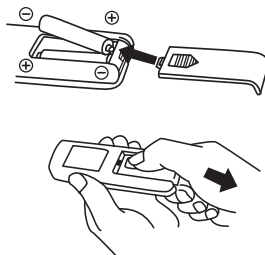
- (1) Slide the battery compartment Cover.
- (2) Insert the batteries, and make sure that the batteries are placed as shown in the Fig.10.
- (3) Slide back the battery cover.

NOTES: Use manganese or alkaline batteries of type "AAA". Do not use rechargeable batteries.



c. BATTERY WARNING AS BELOW

1. “Do not dispose of batteries in fire, batteries may explode or leak.”
2. -Do not mix old and new batteries.
3. -Do not mix alkaline, standard (carbon-zinc) or rechargeable (nickel-cadmium) batteries.



d. REMOTE CONTROLLER OPERATION

Point the remote controller at the receptor on body of the fan and press the desired button. The remote controller will work at distances of up to roughly five meters and the angle of 30 degree included between right and left from the receptor.

The batteries must be removed from the remote controller before it is scrapped and that they are disposed of safely.

e. OVERHEAT PROTECTION OF THE MOTOR

The windings of the motor have a thermal-fuse that burns out and the fan switches off and temperature of the motor is no longer going up so that plastic parts of the fan don't subject to deformation so far so to be burned by the overheat if the motor is overheat for any unexpected reason.

II. Control Panel (Fig.12)

These keys of the control panel may be used as same as of the remote controller.

III. Tilt Adjustment

To adjust the air flow upward or downward, push the grilles lightly to the desired direction.

IV. Height Adjustment

The height of the fan can be adjusted by loosening the height adjustment ring carefully raising or lowering the fan and firmly re-tightening the height adjustment ring.

MAINTENANCE INSTRUCTION

The fan requires little maintenance. Do not try to fix it by yourself. Refer it to qualified service personnel if service is needed.

1. Before cleaning and assembling, fan must be unplugged.
2. To ensure adequate air circulation to the motor, keep vents at the rear of the motor free of dust. Do not disassemble the fan to remove dust.
3. Please wipe the exterior parts with a soft cloth soaking a mild detergent.
4. Do not use any abrasive detergent or solvents to avoid scratching the surface. Do not use any of the following as a cleaner: gasoline, thinner.
5. Do not allow water or any other liquid into the motor housing or interior parts.

CLEANING

1. Be sure to unplug from the electrical supply source before cleaning.
2. Plastic parts should be cleaned with a soft cloth moisten with mild soap. Thoroughly remove soap film with dry cloth.

DISPOSAL: Do not dispose of electrical appliances as unsorted municipal waste, use separate collection facilities. Contact your local government for information regarding the collection systems available. If electrical appliances are disposed of in landfills or dumps, hazardous substances can leak into the groundwater and get into the food chain, damaging your health and well-being.

