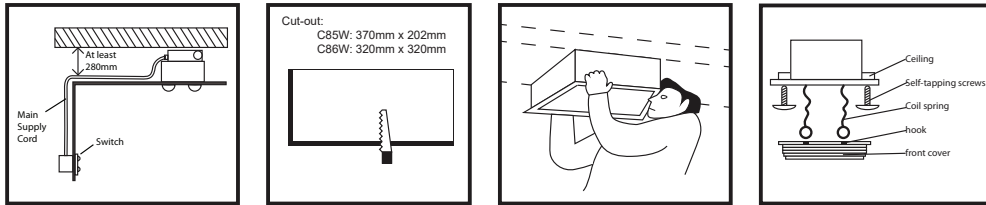
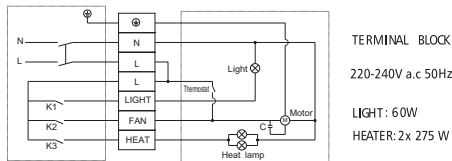


ILLUSTRATIONS:

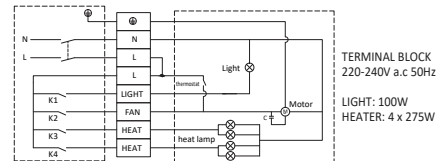


Dual Function Switch

C85



C86



CLEANING

- Before cleaning always ensure the power supply is turned off.
- Do not immerse the Heater in water.
- No abrasive products, solvents, detergent may be used to clean this unit.
- Ensure that the unit does not come in contact with corrosive chemicals, etc.

ALWAYS allow the lamps to cool before attempting to change.

ENVIRONMENTAL PROTECTION



Waste electrical & Electronic equipment regulations requires that any of our products showing this marking must not be disposed of with other household or commercial waste. To prevent possible harm to the environment or human health from uncontrolled waste disposal, please separate any such products from other waste types and recycle it responsibly at your local facilities.

eurolux
Lighting your way

Bathroom Heater, Light & Extractor Fan



C85W: Including 2 x E27 Max 275W heat lamps 230V and 1 x E27 Max 60W reflector 230V
C86W: Including 4 x E27 Max 275W heat lamps 230V and 1 x E27 Max 100W reflector 230V

PRODUCT CODE

C85W / C86W

Cape Town - 9 Racecourse Road, Milnerton, 7441
 Johannesburg - 10 Milkyway Avenue, Linbro Business Park, Sandton, 2065
 email: admin@eurolux.co.za, web: www.eurolux.co.za

Please read instructions before commencing installation and retain for future reference.

SPECIFICATIONS

- **Fitting material:** Plastic.
- **C85W Lamp:** Including 2 x E27 Max 275W heat lamps 230V and 1 x E27 Max 60W reflector 230V
- **C86W Lamp:** Including 4 x E27 Max 275W heat lamps 230V and 1 x E27 Max 100W reflector 230V
- **Voltage:** 220 - 240V~ 50Hz
- **Protection against electric shock:** Class 1. Requires earthing.
- **IP:** X4
- Not for outdoor use or in wet conditions and areas of high humidity.
- **Dimensions:** C85W: (W)440mm x (H)230mm x (D)197mm
C86W: (W)370mm x (H)370mm x (D)270mm
- **Cut-out:** C85W: 370mm x 202mm
C86W: 320mm x 320mm

IMPORTANT SAFEGUARDS

C85W/C86W - attachments:

If the external flexible cable or cord of this unit is damaged, it should be exclusively replaced by the manufacturer or his service agent or a similar qualified person in order to avoid a hazard.

To ensure that you get maximum longevity and maximum use out of your fan, please observe the following safety instructions.



Electrical products can cause death, injury, or damage to property. Installation of the unit must be carried out by a qualified electrician, in accordance with SANS 10142. On completion of installation, ensure that the Certificate of Compliance is updated.

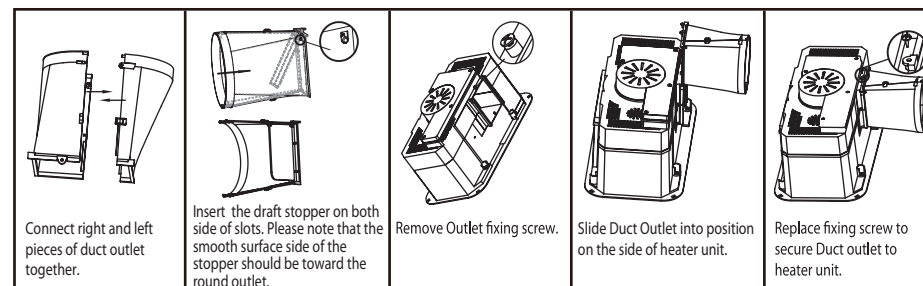
- Before connecting the unit, ensure that voltage indicated on the rating label corresponds with the mains voltage in your home.
- When cleaning, ensure that the power is turned off.
- This unit is checked in full for conformity to the quality standards and safety requirements.
- The manufacturer / supplier is not responsible for any damage of properties and persons, caused by the incorrect use or installation of the unit.
- Should you be unsure of how to install this unit correctly, please consult a professional electrician or your supplier for assistance.
- Ensure all items/ components, threads and screws are tightly secured.

IMPORTANT:

- Tampering with this unit, I.E. Using silicon sealers or incorrect cabling, will invalidate your warranty.
- Please check whether the connection of the power cord is safe and reliable before installation.
- Always ensure that the mains supply voltage is correct.
- Do not use the unit outdoors, in wet conditions.
- This appliance is not intended for use by young children or infirm persons unless they have been adequately supervised by a responsible person.
- Always switch off the unit when cleaning.
- This appliance is not intended for use by persons (including children) with reduced physical, sensory or mental capabilities, or lack of experience and knowledge, unless they have been given supervision or instruction concerning use of the appliance by a person responsible for their safety.
- Children should be supervised to ensure that they do not play with the appliance.

ASSEMBLY:

Please assemble the air outlet before mounting the unit into the hole. Air outlet assemble steps as below:



INSTALLATION:

Check for any hidden timbers, wiring or water pipes in the cut-out area before installation, the unit should have at least 280mm or more space around it to allow for airflow. Ensure that your ceiling can take the weight of the fitting. Always ensure that the electricity is turned off before installing.

The unit should not be installed directly over a shower or bathtub or anywhere that would allow splashing water or steam to make contact with the heat lamps. An adequate air flow is required. Ideally, the airflow path from inlet (eg: window) to the fan should pass over the steam source.

For maximum heat, it is recommended that you stand directly beneath the lamps.

WARNING: The heat lamps do not give off as much light as a standard incandescent lamp. NEVER touch the lamps while the power is on, even if it looks as though the lamp is not burning. ALWAYS allow 5 - 10 minutes for the lamps to cool before touching or changing lamps.

The 3 in 1 bathroom lamp has been designed for cavity type ceilings and it must be mounted in a horizontal position.

Installation:

- 1: Cut away a section of the ceiling board as per the cut-out dimension.
- 2: Remove the heat lamps & reflector lamp, disconnect the coil spring from the hooks on the moulding to remove front cover.
- 3: Push the fitting upwards to snap firmly into position, flush with ceiling, then fix the fitting into place with the self-tapping screws.
- 4: Re-attach the front cover.
- 5: Insert lamps.

Fan Assembly:

Connect the 5 core cable from the fan to the surface mounted switch: 1 x live, 2/4 x heaters, 1 x light, 1 x fan. Ensure the fan is centred, and that the unit is whole.

Connect the power and test the unit.